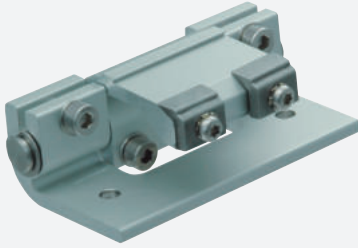
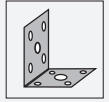


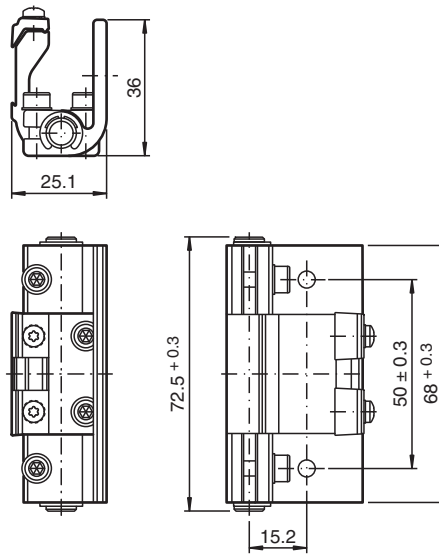
# Mounting aid OMH-SLCT-05



- Mounting bracket
- Large swivel range  $-7^{\circ}$  ...  $+110^{\circ}$
- Sturdy construction
- Simple and fast mounting

Mounting bracket including adjustment

## Dimensions



## Technical Data

### General specifications

Setting angle	$-7 \dots 110^{\circ}$
---------------	------------------------

### Mechanical specifications

Material	Aluminum
Mass	approx. 87 g

### General information

Scope of delivery	Mounting bracket ; 1 Slotted plate ; 4 T-slides ; Screw kit
-------------------	---

### Suitable series

Safety Series	SLCT SLCS
---------------	--------------

Release date: 2020-07-31 Date of issue: 2020-10-06 Filename: 235460\_eng.pdf

Refer to "General Notes Relating to Pepperl+Fuchs Product Information".

Pepperl+Fuchs Group  
www.pepperl-fuchs.com

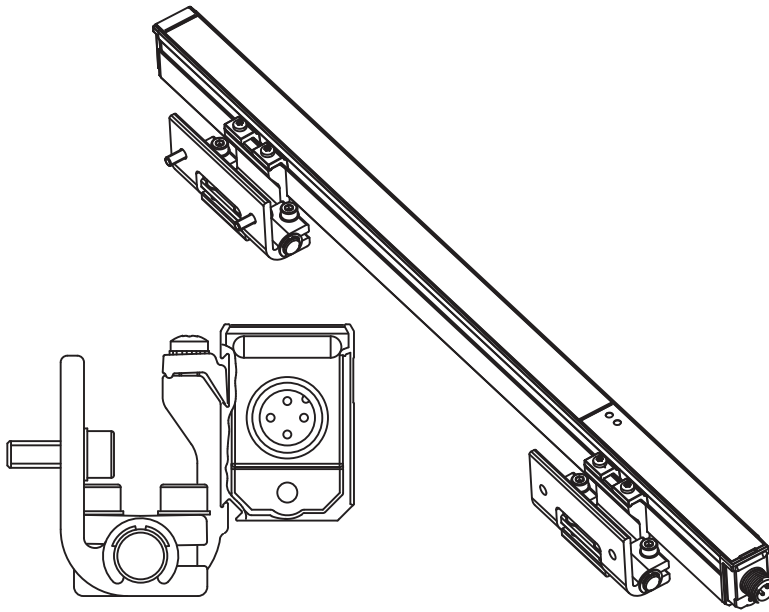
USA: +1 330 486 0001  
fa-info@us.pepperl-fuchs.com

Germany: +49 621 776 1111  
fa-info@de.pepperl-fuchs.com

Singapore: +65 6779 9091  
fa-info@sg.pepperl-fuchs.com

**PEPPERL+FUCHS**

## Assembly



## Mounting

Each package comes with a slotted plate.

To prevent the t-slides from clipping into the upper hole, cover the hole with the slotted plate. Then slide the t-slides into the guide.

